

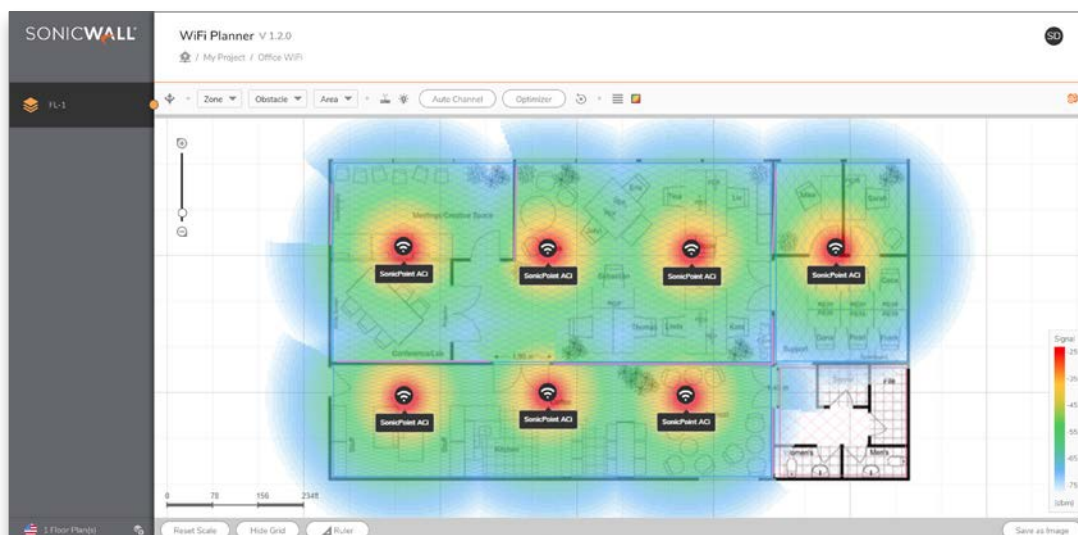
WiFi Planner

Advanced Wireless Site Survey Tool

SonicWall WiFi Planner is an easy-to-use, cloud-based, predictive wireless site survey tool that enables you to optimally design and deploy a wireless network for enhanced user experience. This tool is ideal for planning new access point (AP) deployments or for ensuring excellent coverage in existing wireless networks.

BENEFITS

- Automatic channel assignment prevents interference on a best-effort basis
- Customize AP channel, channel width, power, radio band and more
- View coverage patterns in 2.4 GHz or 5 GHz bands
- Create AP exclusion and Wi-Fi coverage zones
- Multiple obstacle and area customization options
- Connect with global teams
- Support for wireless-enabled TZ Series firewalls and SonicWave APs
- Download images or generate a customizable report



Leverage the right wireless tool to optimally plan and deploy your APs:

sonicwall.com/wifi-planner

Optimize the designing and planning of your wireless network at multiple sites prior to AP deployment. SonicWall WiFi Planner provides comprehensive heat map analysis, granular control and flexibility, all at no additional cost.

Comprehensive Coverage Pattern Analysis

SonicWall WiFi Planner obtains coverage patterns via automatic or manual AP placement, which provides the flexibility to place APs based on requirements. Easily customize environmental variables by manually placing APs in the map, or have the Advisor feature automatically place APs to obtain maximum coverage with the fewest number of access points. Coverage patterns can be observed in 5 GHz and 2.4 GHz radio bands.

Easily customize environmental variables by manually placing APs in the map, or have the Advisor feature automatically place APs to obtain maximum coverage with the fewest number of access points.

Optimize Coverage

WiFi Planner provides auto channel assignment to prevent interference on a best-effort basis. Furthermore, Advisor ensures that APs next to each other are on non-overlapping channels in order to eliminate interference and ensure best performance.

Manually placing APs on WiFi Planner can emulate existing Wi-Fi coverage on the network. Advisor can automatically generate heat maps based on AP model, radio band, transmit power and minimum received signal strength indicator (RSSI). Advisor also identifies and eliminates dead spots in deployments.

The Optimizer feature allows you to further enhance the radio frequency (RF) coverage by moving APs in WiFi Planner to the best position to benefit from optimized coverage. However, it will ignore directional and WDS or mesh-linked APs since they are location-sensitive. WDS and mesh networks can also be simulated by this tool.

Granular Customization Options

WiFi Planner provides multiple granular customization options, such as:

- Zone - AP exclusion, Wi-Fi coverage zone
- Obstacle - Plasterboard wall, drywall, wood wall, metal-framed glass wall, light door, metal door, heavy door, thin window and thick window
- Area - Cubicle office area, closed office area, elevator shaft, warehouse stock (low, medium or high)

Additionally, users can customize the AP inventory to fine-tune RF parameters, e.g., turn radios on or off or change channels, channel sizes and power.

WiFi Planner lets you add multiple projects and floor plans across multiple floors. It can provide collaborative access to teams anywhere across the globe.

Single Sign-On

Log in to WiFi Planner with MySonicWall credentials via SonicWall Capture Security Center. Once logged in, access WiFi Planner via the Wireless Network Manager tile.

Predict Deployment or Upgrade Cost

Advisor estimates the number of access points required based on selections.

Customize Layout

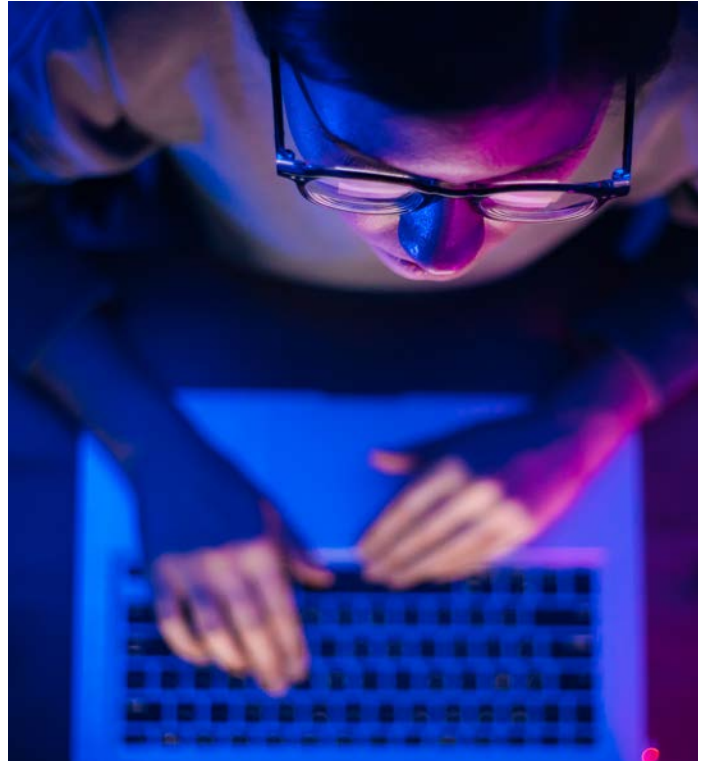
Specify floorplan dimensions with the Scale option and measure distances with the Ruler. You can also customize the layout with the grid and enable or disable grid patterns based on choice.

Support Across SonicWall Wireless Products

WiFi Planner supports a variety of SonicWall products, including SonicWave APs and wireless-enabled TZ Series firewalls.

Download Reports

Create customized reports that can be downloaded in PDF or Word format, or download the simulated image in JPEG.



To learn how you can be more successful in planning and deploying your wireless solution, download the solution brief:

Solution Brief: Best Practices for Optimal Wireless Access Point Deployment

About SonicWall

SonicWall delivers Boundless Cybersecurity for the hyper-distributed era and a work reality where everyone is remote, mobile and unsecure. By knowing the unknown, providing real-time visibility and enabling breakthrough economics, SonicWall closes the cybersecurity business gap for enterprises, governments and SMBs worldwide. For more information, visit www.sonicwall.com.

SonicWall, Inc.

1033 McCarthy Boulevard | Milpitas, CA 95035

Refer to our website for additional information.

www.sonicwall.com

SONICWALL®

© 2022 SonicWall Inc. ALL RIGHTS RESERVED.

SonicWall is a trademark or registered trademark of SonicWall Inc. and/or its affiliates in the U.S.A. and/or other countries. All other trademarks and registered trademarks are property of their respective owners. The information in this document is provided in connection with SonicWall Inc. and/or its affiliates' products. No license, express or implied, by estoppel or otherwise, to any intellectual property right is granted by this document or in connection with the sale of SonicWall products. Except as set forth in the terms and conditions as specified in the license agreement for this product, SonicWall and/or its affiliates assume no liability whatsoever and disclaims any express, implied or statutory warranty relating to its products including, but not limited to, the implied warranty of merchantability, fitness for a particular purpose, or non-infringement. In no event shall SonicWall and/or its affiliates be liable for any direct, indirect, consequential, punitive, special or incidental damages (including, without limitation, damages for loss of profits, business interruption or loss of information) arising out of the use or inability to use this document, even if SonicWall and/or its affiliates have been advised of the possibility of such damages. SonicWall and/or its affiliates make no representations or warranties with respect to the accuracy or completeness of the contents of this document and reserves the right to make changes to specifications and product descriptions at any time without notice. SonicWall Inc. and/or its affiliates do not make any commitment to update the information contained in this document.