



- **Easy, flexible device profiling**
- **Robust endpoint interrogation**
- **Comprehensive cache control**
- **Unmanaged endpoint device protection**
- **Windows device identification**
- **Mobile device identification**

Enhanced Enterprise Network Security

Extending the functionality of industry-leading SonicWALL® Aventail® E-Class End Point Control™ (EPC™) technology, SonicWALL Aventail E-Class Advanced EPC brings together the most advanced endpoint detection with the most advanced data protection in the industry in a single add-on feature. With the additional protection of its Advanced Interrogator and Secure Desktop features, Advanced EPC makes your SonicWALL Aventail E-Class Secure Remote Access (SRA) appliance the easiest to use secure remote access controller on the market.

Features and Benefits

Easy, flexible device profiling simplifies granular endpoint protection by allowing administrators to set up Windows®, Macintosh® or Linux® device profiles from a comprehensive predefined list. The Advanced Interrogator list includes all supported anti-virus, personal firewall and anti-spyware solutions from leading vendors like McAfee®, Symantec®, Computer Associates®, Sophos®, Kaspersky Lab® and many more. To configure device interrogation, the administrator can simply check off policy requirements from this list, without having to manually enter multiple product names, versions and updates.

Robust endpoint interrogation provides granular, flexible control of endpoint device interrogation criteria. Administrators can select the specific vendor and product name for each solution category and can also specify what product version to check (e.g., the product must be version 7 or must be equal to or greater than version 6.x or must NOT be version 5). Administrators can also specify a date range in which the product last had its signature file updated (e.g., only allow access if the signature file was updated in the last 15 days). SonicWALL Recurring EPC performs endpoint scans at user login and at administrator-defined intervals to ensure the ongoing integrity of any endpoint.

Comprehensive cache control builds upon the SonicWALL Aventail Cache Control feature, which goes beyond the basic cache cleaning of other SSL VPNs. Cache Control deletes Web session data, including browser cache, history, cookies and passwords and removes all protected data for the current session. Additionally, Cache Control works on Windows and Macintosh machines and protects data even if the user walks away from the PC or closes the browser window.

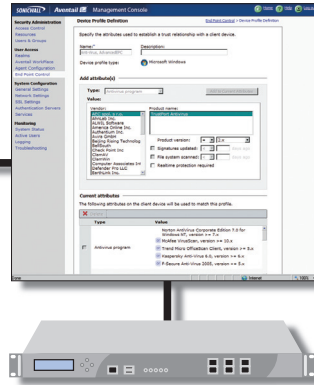
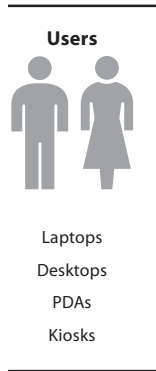
Unmanaged endpoint device protection takes data protection to an even higher level. This feature delivers the utmost data protection for unmanaged workstations —such as airport kiosks or Internet café PCs. Secure Desktop is a “virtual” Windows session that runs on top of the actual desktop. A mobile user can browse the Internet, check email and work with personal files using client/server applications, but once the session is over, all sensitive data is automatically and thoroughly removed from the unmanaged workstation.

Windows device identification provides administrators with the ability to tie a Windows Device ID to a user by checking the device hard drive serial number via End Point Control interrogation and comparing this information against information stored in Active Directory or LDAP. Administrators will also be able to allow user self registration, allowing users to register their device hard drive's serial number the first time they login, and the SonicWALL Aventail SSL VPN will collect the hard drive serial number and provide it in a format that can be exported to Active Directory or LDAP. Administrators can then review collected information for approval.

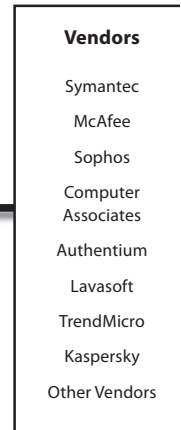
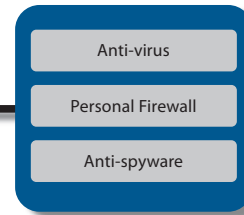
Mobile device identification ensures that when an iPhone®, iPad®, Android® or Symbian® Mobile device is used to gain access to network resources, the SonicWALL Aventail End Point Control will be able to capture the iPhone's Equipment ID variable (tied to the iPhone's serial number), and can then compare that information to what is on record for the user in AD or LDAP.



Advanced EPC
 E-Class SRA EX6000
 01-SSC-9620
 E-Class SRA EX7000
 Included in purchase of SRA 7000



SonicWALL Aventail Smart SRA Appliance with Advanced EPC



Protection Based on Both Policy and the Endpoint

Advanced EPC applies the market-leading combination of SonicWALL Aventail Unified Policy™ and End Point Control to initiate specific features only when the administrator determines they are appropriate, providing flexible, easy-to-manage remote access options. For example, an administrator may choose to set up Policy Zones that automate security enforcement, such as:

- Employee home PCs: initiate Cache Control
- Managed corporate laptop: no Secure Desktop or Cache Control required
- Airport kiosks: initiate Secure Desktop

Advanced EPC— Real World Applications

- Executives work occasionally from home PCs with an anti-virus programs set up for automatic weekly signature file updates. IT administrators become aware of a critical anti-virus patch released over the last 24 hours. Advanced Interrogator lets IT staff quickly and easily reconfigure all pre-authorization device scans to ensure signature files have been updated before allowing access.
- Doctors need to view patient X-ray images from locations other than their clinic or healthcare facility. Secure Desktop helps them maintain privacy regulation compliance by ensuring the images and patient information will be automatically deleted after being viewed.
- A salesperson logs on to a CRM application from an airport kiosk, then rushes off to catch a flight, leaving confidential customer data potentially exposed in the local cache. Advanced EPC with Cache Control automatically ensures all cache data from the session is destroyed.

Detect-Protect-Connect

Unlike other solutions that offer only “access” or “no access,” Advanced EPC delivers broad controlled access to your users, without compromising security. With the secure synergy of Advanced Interrogator and Secure Desktop, Advanced EPC provides advanced functionality to:

- Detect the security of the endpoint with simplified set-up and granular controls
- Protect data by removing all post-session information from unmanaged workstations
- Connect users to resources based upon administrative policy controls

By uniting these enhanced features, Advanced EPC delivers the most robust remote access control available.

For more information about SonicWALL Aventail E-Class Secure Remote Access solutions, please visit www.sonicwall.com.

SonicWALL’s line-up of dynamic security solutions



NETWORK SECURITY



SECURE REMOTE ACCESS



WEB AND E-MAIL SECURITY



BACKUP AND RECOVERY



POLICY AND MANAGEMENT

SonicWALL, Inc.

2001 Logic Drive, San Jose, CA 95124
 T +1 408.745.9600 F +1 408.745.9300
www.sonicwall.com



DYNAMIC SECURITY FOR THE GLOBAL NETWORK™